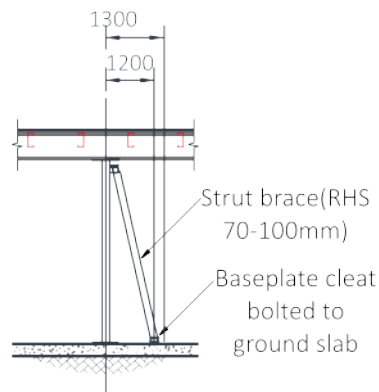


Stability Bracing

A Mezzanine's bracing is an integral aspect of its design and for its successful use upon installation.

In order to maximise our partners' space within their premises, Hi-Level are able to provide several different types of bracing.

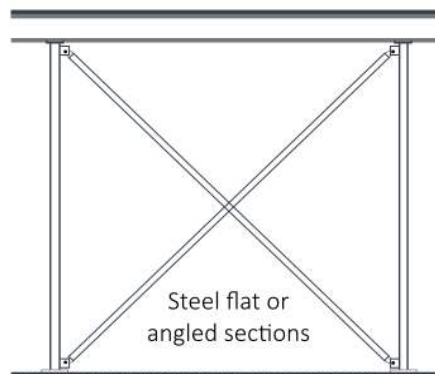
Strut Brace



Typical Detail of Strut Brace

✚ Most cost-effective solution

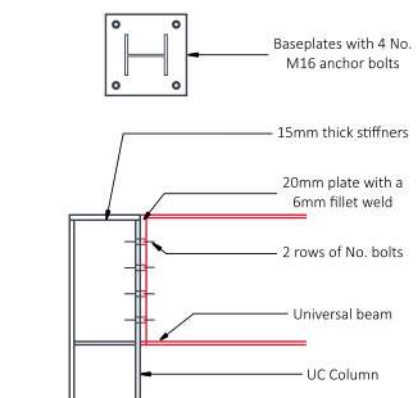
Cross Brace



Typical Detail of Cross Brace

✚ Typically used on multi-tier structures

Stability Brace Frame



Typical Detail of Stability Brace Frame Connection

✚ No additional vertical members

✚ Best for Operational flow